



THE COMFORTABLE LIFT HYGIENE CHAIR

Alenti

Safety and comfort

Alenti® is an integral part of a safe, comfortable bathing cycle. This lift hygiene chair from Arjo gives the resident superior comfort and constant security during transfers, transport and the bathing session itself.

Alenti enables active or semi-active residents such as Albert, Barbara and Carl in the Mobility Gallery™ to gain comfortable access to the benefits of bathing.

Combined with a wide range of Arjo tubs, *Alenti* forms a complete bathing system. The resident remains securely seated on the *Alenti* from the moment they are collected at the bedside to the moment they are returned clean and refreshed after the bathing session.

Alenti is a versatile lift hygiene chair. As well as being used in the lifting, transport and bathing of residents, it is also designed to provide optimum support and ergonomics in toileting and pedicure routines.





An integrated system enhances ergonomics

Alenti can help you optimize ergonomics in the bathing cycle when it is used as an integrated part of a complete Arjo bathing system.

The benefits of using *Alenti* are maximized when it operates as part of an integrated and complete Arjo bathing system. *Alenti* is compatible with all lengths of Arjo height-adjustable baths, as well as with the Century™ sit bath.

With *Alenti*, a single caregiver can safely manage all aspects of the bathing cycle and work in an ergonomically sound posture. The battery-powered *Alenti* offers many features designed to enhance ergonomics — from dual controls and height-adjustability to ergonomic grips and central braking. Using *Alenti* means eliminating manual lifting from the bathing cycle, and the number of resident transfers is minimized, as the resident stays seated on the *Alenti* during all procedures.

An integrated bathing system enhances ergonomics. Using the height-adjustable *Alenti* in conjunction with a height-adjustable Arjo tub is the perfect combination for optimized ergonomics, as caregivers can always perform routines at the correct working height.



Integration benefits

An integrated bathing system provides a better working environment and gives the caregiver more time to focus on the resident, enabling high-quality, one-to-one care.

Ergonomic routines

Height adjustment is easily controlled by either handset controls or pillar mounted controls. The *Alenti* seat can always be set at the optimum working height to ensure best ergonomics.



Dual controls:
handset and
pillar mounted



Bedside

Retrieving the resident from the bed is an efficient and safe routine. The resident is transferred onto the *Alenti* seat, which is optimally positioned at the bedside.



Transfer and transport

After the transfer, the seat is raised to the optimum height for transport. The resident is securely seated supported by the safety belt and the embracing arms of *Alenti*.



Smooth transfer to tub

At the bathside, the patient is lowered into the tub. Once the seat is submerged, the back support can be rotated and the resident can recline in the bath.



Showering in the tub

After bathing, the *Alenti* seat is raised to bring the resident to an optimum height for the caregiver to comfortably perform final showering routines.



Keep going with 2x power

The unit is always delivered with two high-capacity batteries. With one battery always fully charged, *Alenti* offers maximum availability, always ready for use.

Features and benefits



Weigh scale

With a highly accurate on-board electronic scale, *Alenti* can be used as a more convenient alternative for weighing residents.



Ergo grips

Ergonomically designed handlebar grips ensure good bedside and bathside maneuvering of the *Alenti* and easy cornering when transporting the resident.



Optimized lateral transfers

With the *Alenti* seat adjusted to the optimum height, if appropriate, wheelchair-bound residents may be able to make a smooth sideways transfer.



Free wheeling

Specially designed smooth-running castors make *Alenti* highly maneuverable and easy to turn.



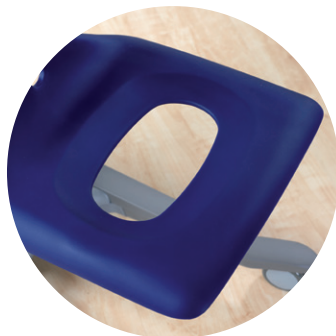
Safety belt

The comfortable belt ensures optimum support, so the resident remains securely in position while on the *Alenti*.



Reassuring feel back

Residents with a greater degree of mobility feel reassuring contact with the anatomically designed seat to confirm correct positioning when seating themselves.



Easy cleaning routines

The seat's one-piece construction and smooth surfaces makes it hygienic and easy to clean and disinfect.

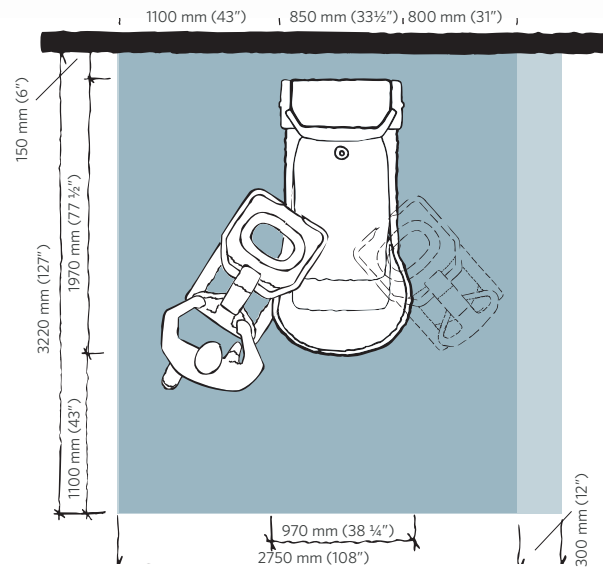


Complete control

Raising, lowering and central braking functions are efficiently controlled with a handset, enabling the caregiver to stay close to the resident. A secondary set of controls are found integrated into the pillar of the *Alenti*.

Key features

SPACE REQUIREMENT



Blue area shows the minimum working area required for the staff to be able to use the mechanical aids in an ergonomic way from one side.

Light blue area shows required extension of working area to facilitate activities from either side to provide adequate access for the resident, mechanical aid and assisting caregiver.

PRODUCT INFORMATION

<i>Alenti</i> without scale	CDB8103-01
<i>Alenti</i> with scale	CDB8153-01
Safe working load	400 lbs (182 kg)
Lifting stroke	23" (585 mm)
Total width	23 3/4" (605 mm)
Total length	35 1/2" (900 mm)
Protection class	IP 66 (Handset)

ACCESSORIES

Integrated scale, verified for the EC market	CDA 2100-01
Bedpan holder	CDA 1104-90
Bedpan with lid	CDA 1500-07
Leg rest for pedicure	CDA 1300-04
Safety belt	CDA 1450-035

MOBILITY GALLERY

Suitable for Albert, Barbara and Carl.



A Albert, who is ambulatory and independent.

B Barbara, who can support herself to some degree.

C Carl, who sits in a wheelchair and has little capacity to support himself.

Please contact Arjo for further information on the Mobility Gallery™.

Only Arjo designed parts, which are designed specifically for the purpose, should be used on the equipment and products supplied by Arjo. As our policy is one of continuous development we reserve the right to modify designs and specifications without prior notice. © Arjo, February 2019.

At Arjo, we are committed to improving the everyday lives of people affected by reduced mobility and age-related health challenges. With products and solutions that ensure ergonomic patient handling, personal hygiene, disinfection, diagnostics, and the effective prevention of pressure ulcers and venous thromboembolism, we help professionals across care environments to continually raise the standard of safe and dignified care. Everything we do, we do with people in mind.

Arjo Inc. · 2349 West Lake Street · Addison, Illinois 60101 · 800-323-1245 · www.arjo.us

Arjo Canada Inc. · 90 Matheson Blvd West, Suite 350 · Mississauga, ON, L5R 3R3 · 800-665-4831 · Info.Canada@arjo.com · www.arjo.ca