

STARTUP

Simplified explanation of system startup. For full information see the form "SMART BRAKE - Technical specifications".

1. To boot the system:

Press the connection button on the brake unit. The system will now perform a calibration test of the brakes. After 30 minutes the system will automatically turn off. Start up the system again by moving the bike.

2. Connect brake control with brake unit:

a) Hold connection button until it starts flashing b) Trigger the control until the light stops flashing. To connect two brake units or multiple hand controls, see the form "SMART BRAKE - Functional description"

USE AND COMMUNICATION

Simplified explanation of light signals and functions in use. For full information see the form "SMART BRAKE - Technical specifications".

LED INDICATORS

The system communicates with the user through two different colors and light signals: Blinking and constant light.

1. Red light

A red signal means low battery level, activated parking brake or system failure. Red light will also occur as a blinking light while charging the brake control or brake unit.

2. White light

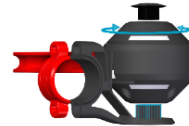
When fully charged a white constant light occurs in LC.

3. Blue light

= connection between brake control and brake unit has been established.

POSITION OF LEVER CONTROL

By setting the lever in preferred position the technology automatically adjust itself to obtain proper braking force per degree of lever movement.



USE OF LEVERS

1. Pull lever towards you from neutral position to build up brake force.
2. Push lever one notch up from neutral to put the system in parking brake.



FAIL-SAFE

SMART BRAKE has built-in fail-safe function at low battery or signal failure: The brake will automatically be activated for calm and controlled braking and eventually stopping.

COMPANION CONTROL

Additional remote control can be connected to the brake unit and controlled from 15m (radius). It provides companions the opportunity to, among other things, control the braking and parking on behalf of the user.